



# Sheyenne Plaza



## Sheyenne Plaza by EPIC

# OFFICE SPACE AVAILABLE

## ADDRESS

444 Sheyenne St. West Fargo ND, 58078

## PROPERTY DETAILS

<b>Available:</b>	Now
<b>Square Feet:</b>	212 SF, 1,250 SF
<b>Lease Rate:</b>	\$700.00 and \$2,200 a month
<b>Terms:</b>	12-Month Lease Minimum
<b>Amenities:</b>	All Inclusive, Wifi, Restrooms, Lobby





# Sheyenne Plaza by EPIC

444 Sheyenne St. West Fargo, ND 58078

## NEIGHBORHOOD FEATURES

### POPULATION

.5 mi. 3,469 people	1 mi. 10,774 people	3 mi. 43,073 people
---------------------------	---------------------------	---------------------------

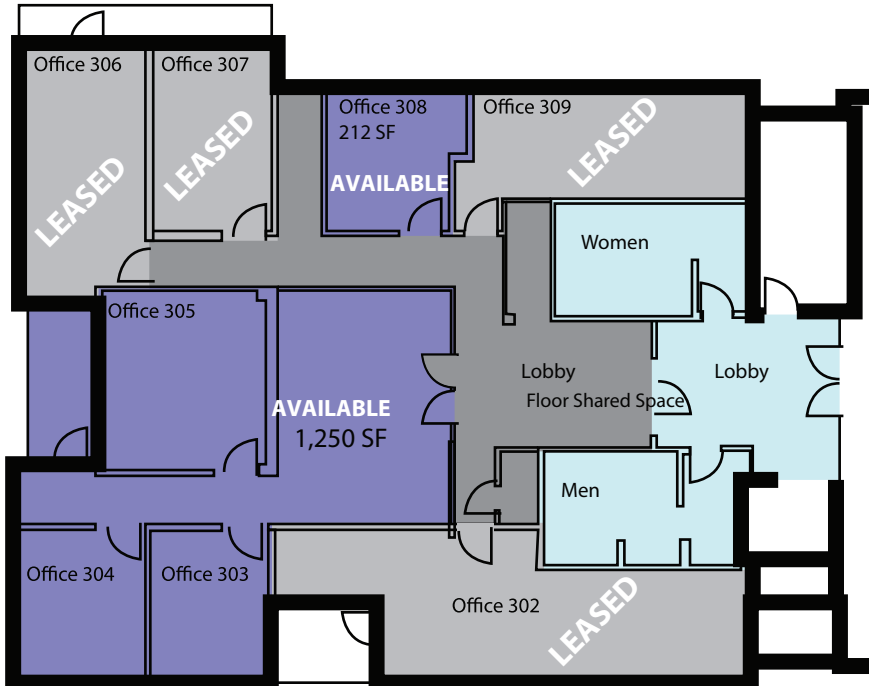
### BUSINESSES

.5 mi. 187 businesses	1 mi. 427 businesses	3 mi. 2,217 businesses
-----------------------------	----------------------------	------------------------------

### EMPLOYEES

.5 mi. 1,866 employees	1 mi. 4,941 employees	3 mi. 39,415 employees
------------------------------	-----------------------------	------------------------------

Source: ESRI Business Analysis





# Sheyenne Plaza by EPIC

444 Sheyenne St. West Fargo, ND 58078

## OVERVIEW

Sheyenne Plaza is a mixed-use center that caters to the growing demand for lifestyle communities, those that serve as multi-purpose environments where living, shopping, working, playing and socializing co-exist. This area has a built-in customer base with 22 residential units lofted above three levels of commercial space. The building has an attractive design in a prominent location with flexible space and allied services. Not only is Sheyenne Plaza modern in it's design, the offices offer many modern amenities. Guest wifi, parking, bathrooms and a modern styled lobby.



## CONTACT



### **Brian Kounovsky**

Board of Directors

701.361.5948

BrianK@EPICCompaniesND.com

*Sheyenne Plaza*



Investment • Development • Management

**701.866.1006**

**EPICCompaniesND.com**