



TAB 42

Fargo, ND



TAB
BY EPIC **42**

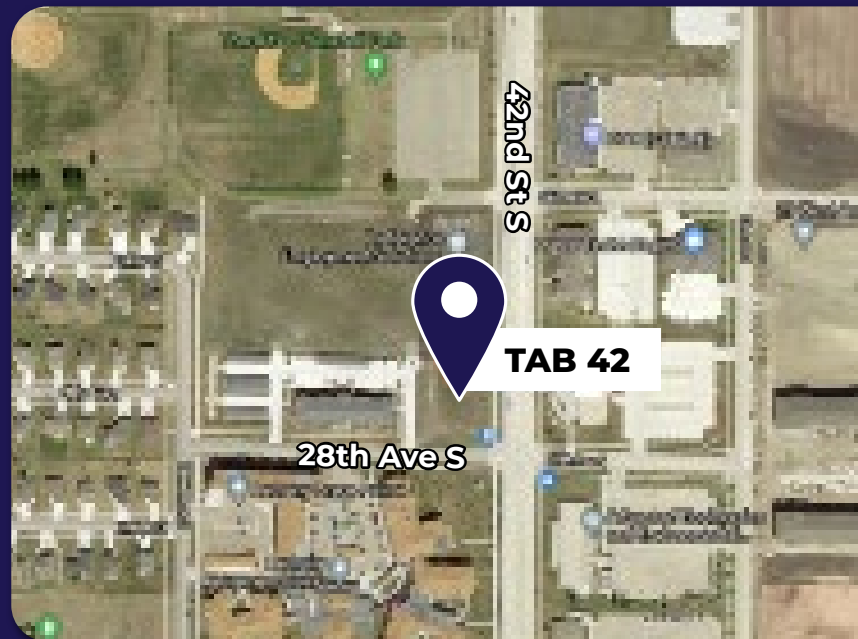
COMMERCIAL SPACE AVAILABLE

ADDRESS

4207 28th Avenue S, Fargo, ND 58104

PROPERTY DETAILS

Lease Rate	\$18+CAM
Total Space	14,000+ SF
Space Available	≥875 SF
Lease Term	5 Years
Date Available	2022
Floors	1st & 2nd Floors
Style	Office
Fit-up Allowance	\$25/SF



701.866.1006
EPICCompaniesND.com

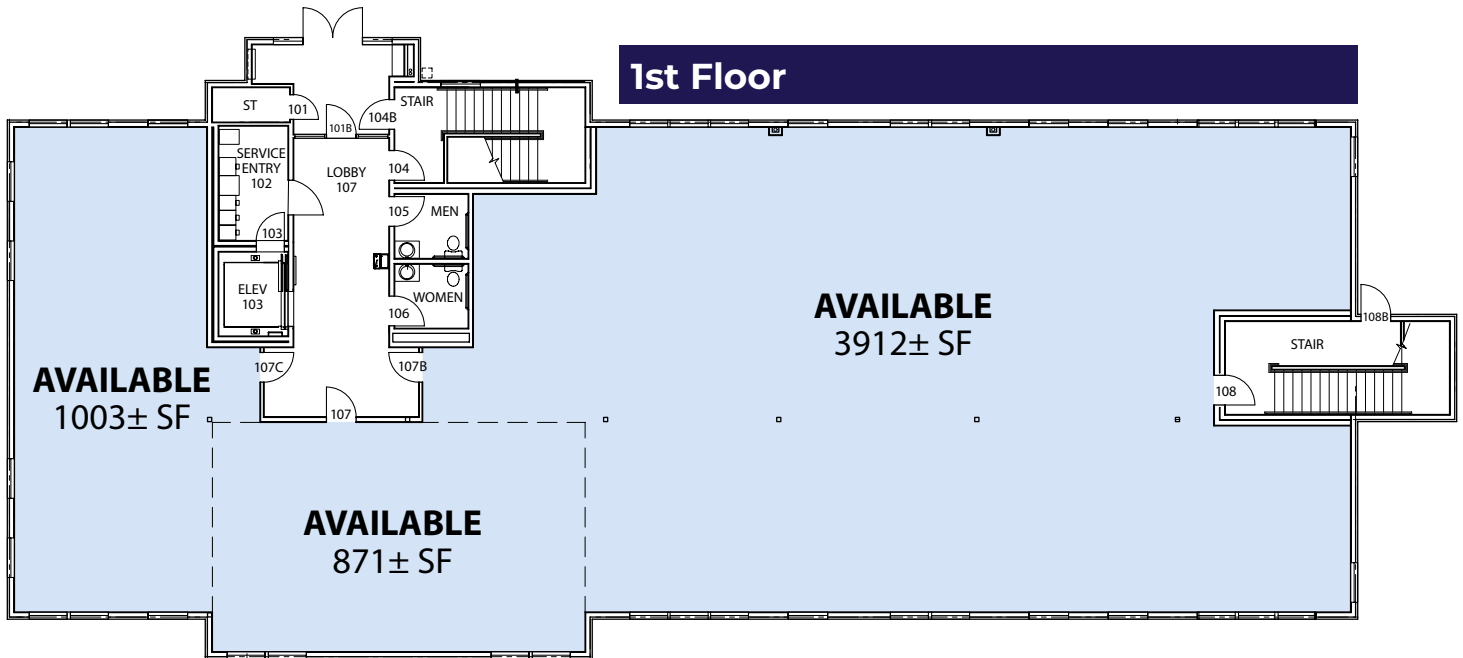




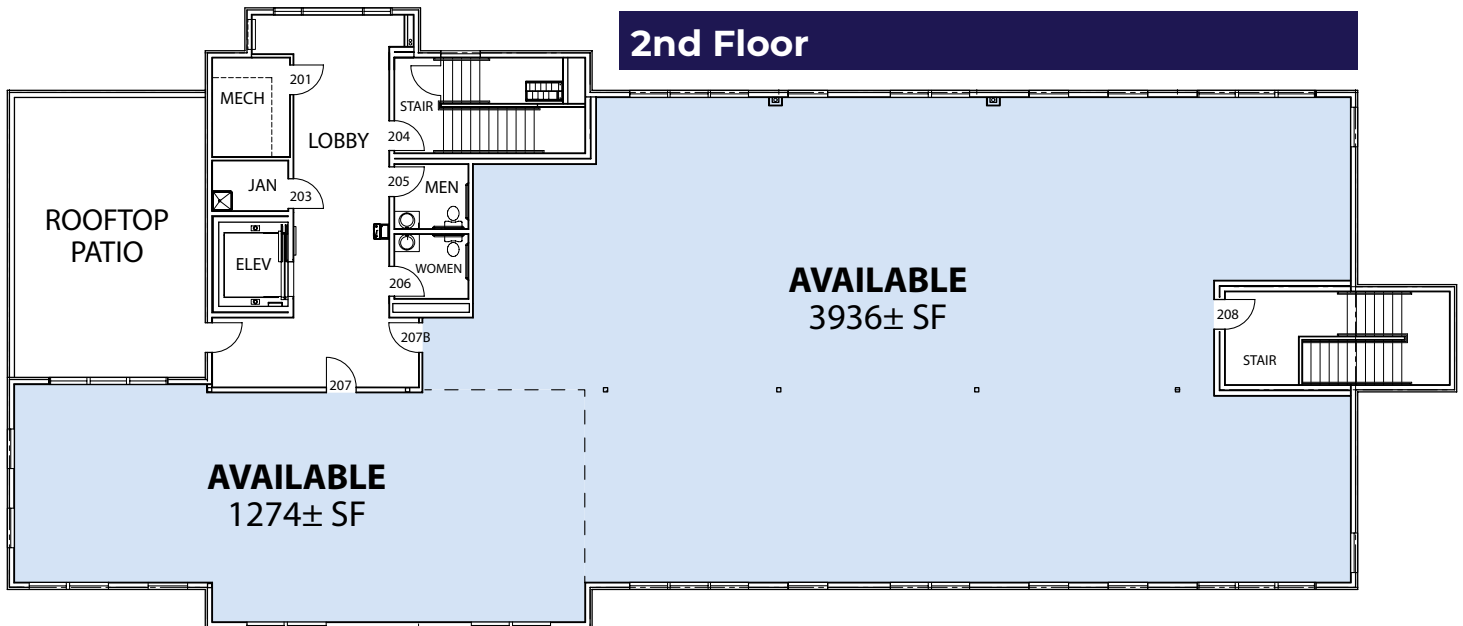
TAB 42

4207 28th Ave S, Fargo, ND 58104

1st Floor



2nd Floor





TAB 42
PROJECT OVERVIEW
 4207 28th Avenue S, Fargo, ND 58104



OVERVIEW

TAB 42 is a commercial rental building in Fargo, ND. This space will provide an opportunity to serve any type of business. This property will include 2 stories of commercial space with a rooftop patio! Construction will break ground Summer 2021.

Features

- Digital monument sign
- Established business district
- Ample parking
- Rooftop patio

Nearby Locations of Interest

- Bars & restaurants
- Red River Zoo
- Parks
- Residential communities

NEIGHBORHOOD FEATURES

Population (No. of People)		
.5 mile	1 mile	3 miles
1,961	10,748	102,312

Business (No. of Businesses)		
.5 mile	1 mile	3 miles
134	404	4,121

Employees (No. of Employees)		
.5 mile	1 mile	3 miles
2,238	7,063	67,481

Source: ESRI Business Analysis



Zach Frappier
 Commercial Sales
 701.388.6919 | Zach@EPICCompaniesND.com

