



Unite
Fargo, ND

OFFICE SPACE AVAILABLE

ADDRESS 234 Main Avenue, Fargo, ND 58103



PROPERTY DETAILS

Lease Rate	\$2,871/Month
Lease Term	5 Years
Style	Executive Offices
Space A	1,044 SF
Space B	1,044 SF

SPACE DETAILS

Each space includes 3 individual offices, a conference room, bathroom, kitchenette, and reception area.

AMENITIES

Being a tenant at Unite gives you access to indoor parking, a fitness center with showers, a community room, and a reception area.

PRICING INLCUDES

Your all encompassing fee includes rent rate, CAM, and standard fit-up. Additional parking spots can be purchased for clients/customers during the day.



EXECUTIVE OFFICE SPACE ON THE RED RIVER

The Gateway Center development is in a prime location just past the river on a high-traffic street, connecting Fargo and Moorhead.

Unite will concluded construction in 2025 and will consist of commercial space, condos, and apartments. Surrounded by a built-in customer base, this location benefits any type of business whether retail, professional office, customer service, and others.

701.866.1006
EPICCompaniesND.com



SPACE DETAILS

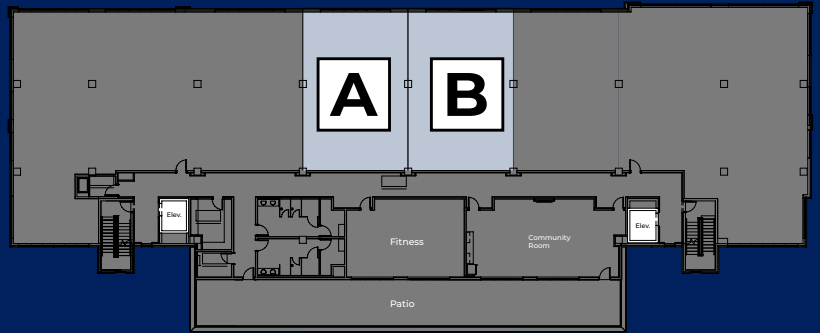
SPACE A

Square Footage 1,044
Lease Rate \$2,871/Month
Lease Term 5 Years

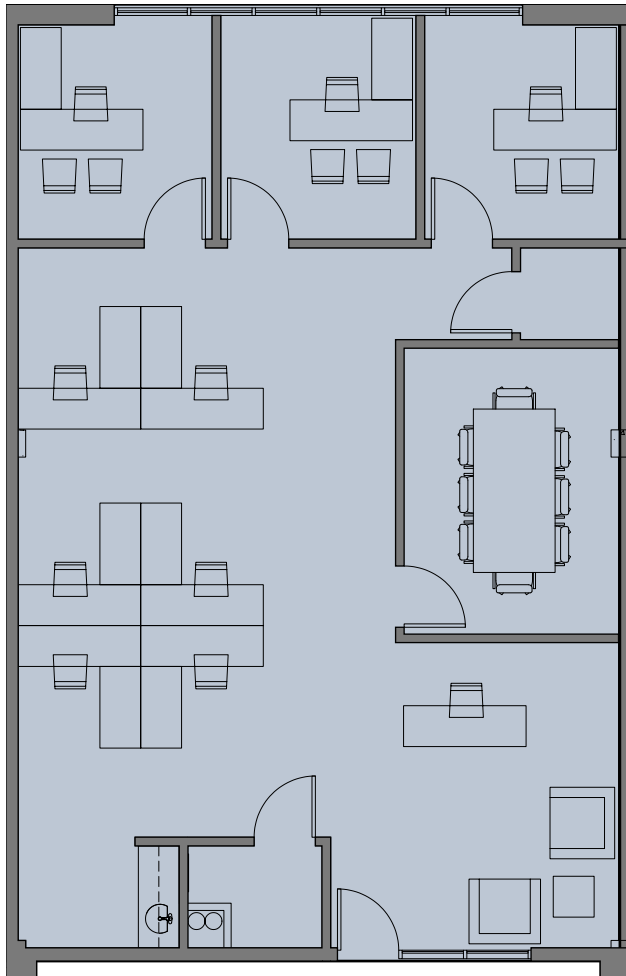
SPACE B

Square Footage 1,044
Lease Rate \$2,871/Month
Lease Term 5 Years

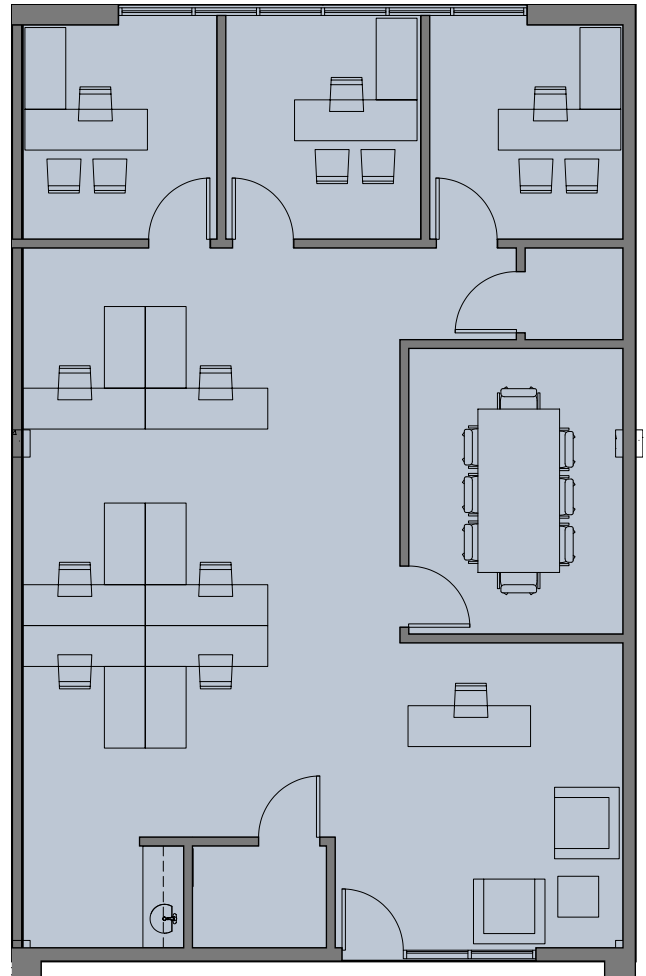
The Executive Office Spaces in Unite are located on the 3rd floor of the building, between three larger commercial spaces.



Space A floorplan



Space B floorplan



Zach Frappier

Director of Realty

701.388.6919 | Zach@EPICCompaniesND.com

SPACE A RENDERINGS



SPACE B RENDERINGS

